

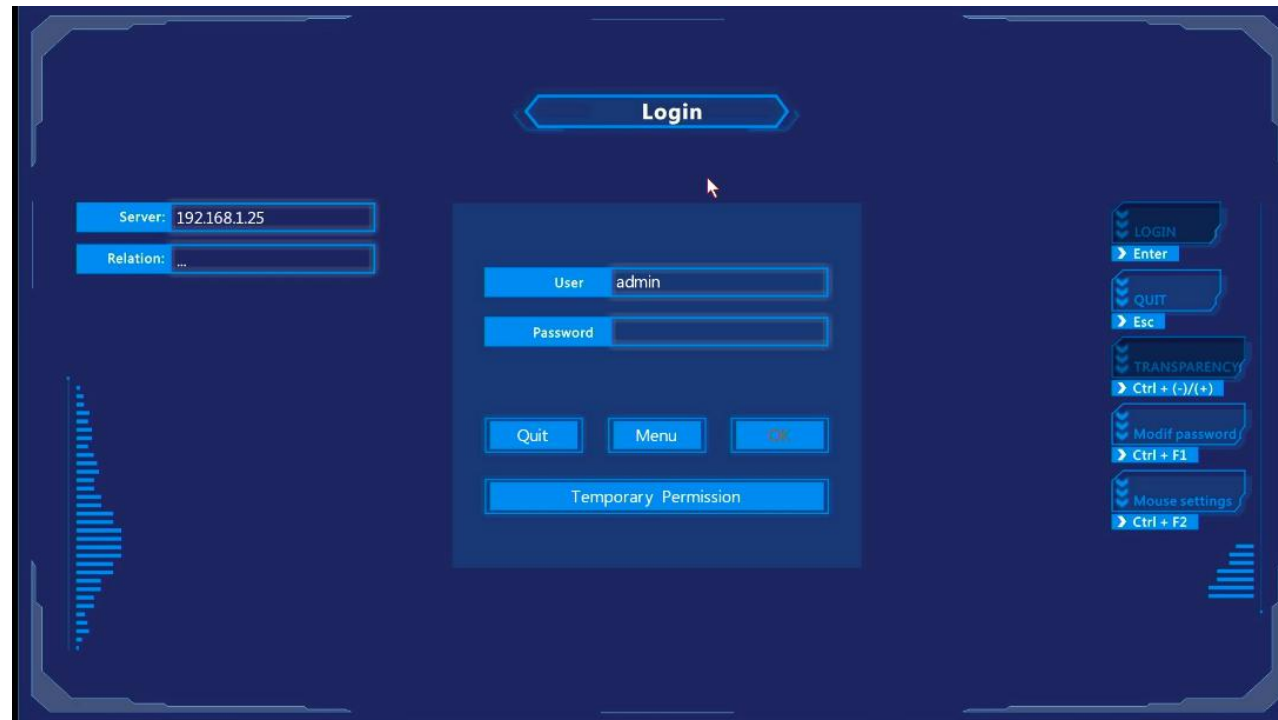


**AVCIT<sup>®</sup>**

# AVCIT DS3.0 Training Manual for Operator

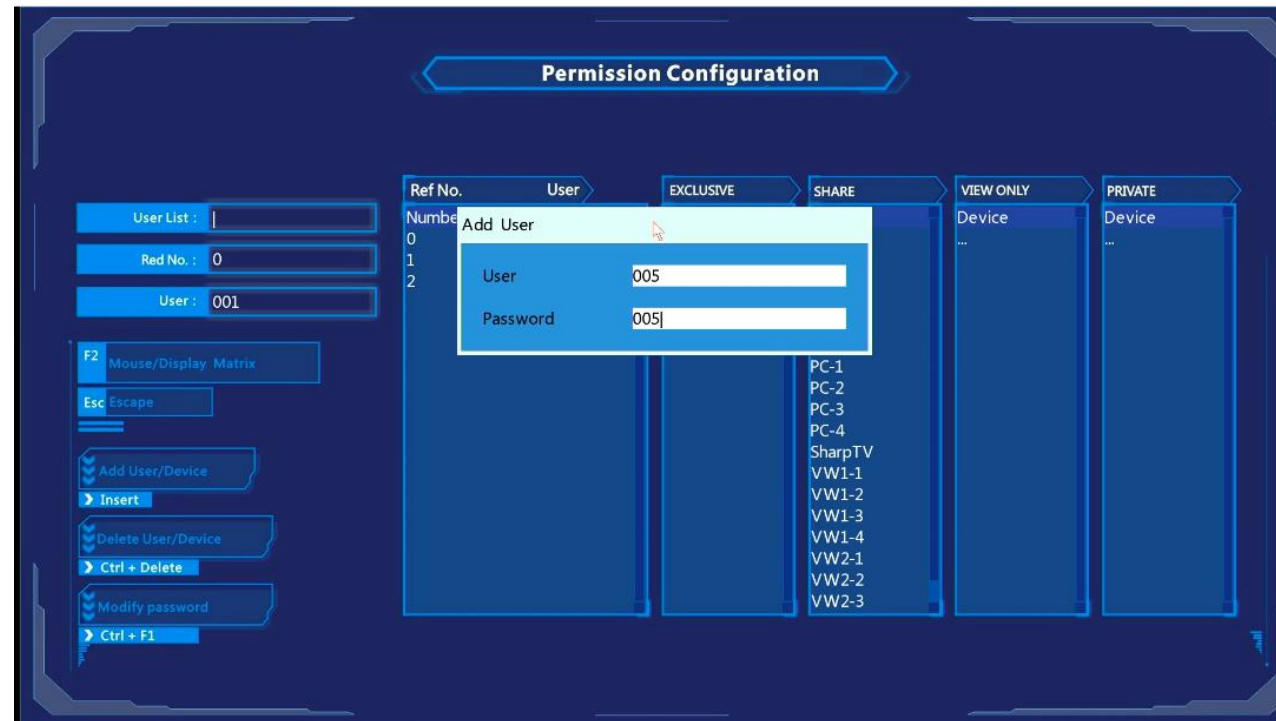
# Log in/out

- After you finish all cable connection, and video wall partition, Double-click “Ctrl”, to login OSD, user ID/password is admin/admin.
- On any OSD interdice, Press “Window” at your keyboard to return to LOGIN



# Configuration - Add Operator

- Press "Menu" button in the center of "LOGIN" OSD, to enter Permission Configuration; Press "Insert" to add new operator i.e. 005, Set ID and password
- Select user 005, At column of "SHARE", Press "Insert" to pop up a list of IP addresss, which are the server/workstations connecting to KVM encoders one by one;
- Select the correct IP address(according to the planned permission level) and press "ENTER", Press "Esc" 2 times to save;



# Permission Level for KVM

KVM Source have 4 Permission level for a new created user:

- PRIVATE: Just keep it blank, usually no use(No entry for current operator)
- VIEW ONLY: for operator view only, use “SPACE” only if the operator have SHARE permission channel/source, otherwise Dialog box “No Permission” will pop up
- SHARE: for multiple operator access at the same time, use “Enter” only if the operator have SHARE permission channel/source, otherwise Dialog box “No Permission” will pop up; Operator can also use SPACE to get access to an SHARE channel, but with corresponding and lower level VIEW ONLY permission
- EXCLUSIVE: for single operator access only, use “Shift+Enter” only if the operator have EXCLUSIVE permission on this channel/source, otherwise Dialog box “No Permission” will pop up.

# Introduction to the GET/PUSH interface

- Priority List Zone: on the left and center, you can add/remove by F3/F4, because there are possibly hundreds of node devices in a system.
- Devices Zone: on the right and center, a list of devices which is either access via AVCIT node, or directly a RTSP source.



# Introduction to the KVM Control Panel(Visualized GET)

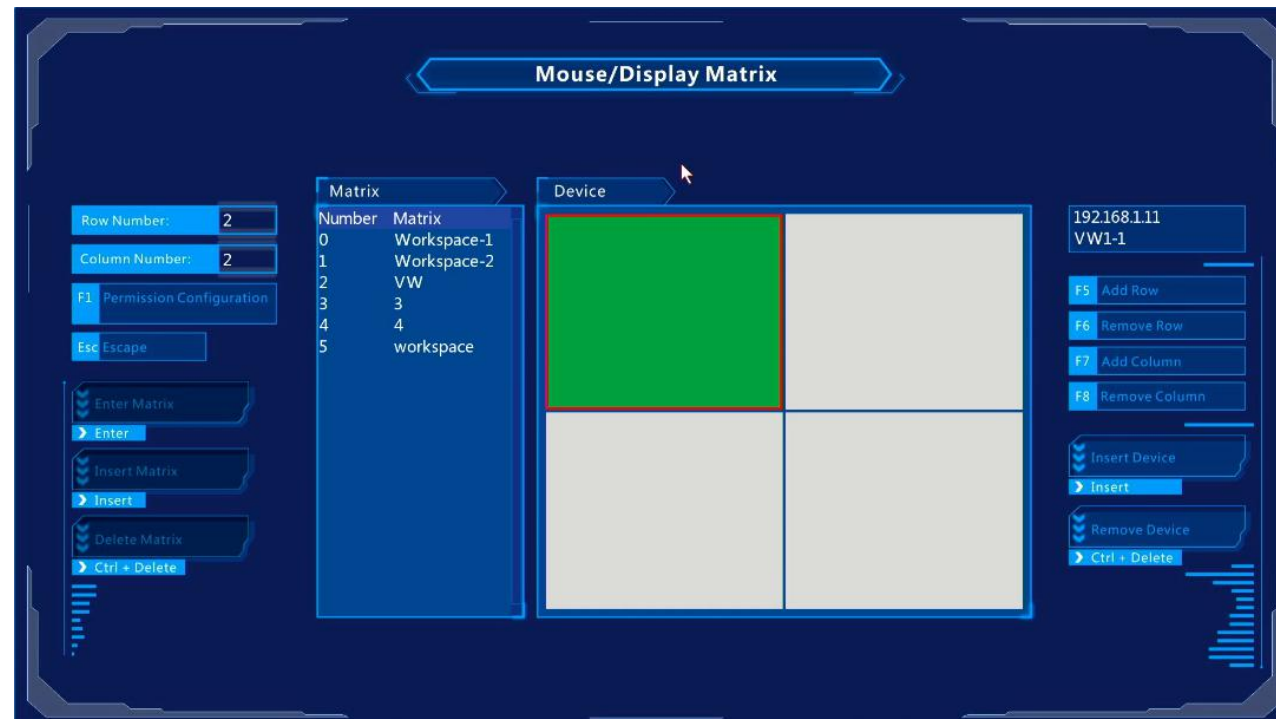
- KVM Control Panel is another version of GET interface, that allow operator to preview all sources that he is going to access



# Introduction to the Display/Mouse Matrix

Mouse/Display Matrix is the OSD, to connect multiple monitor to have the function of “cross-monitor-switching”, steps are as follows:

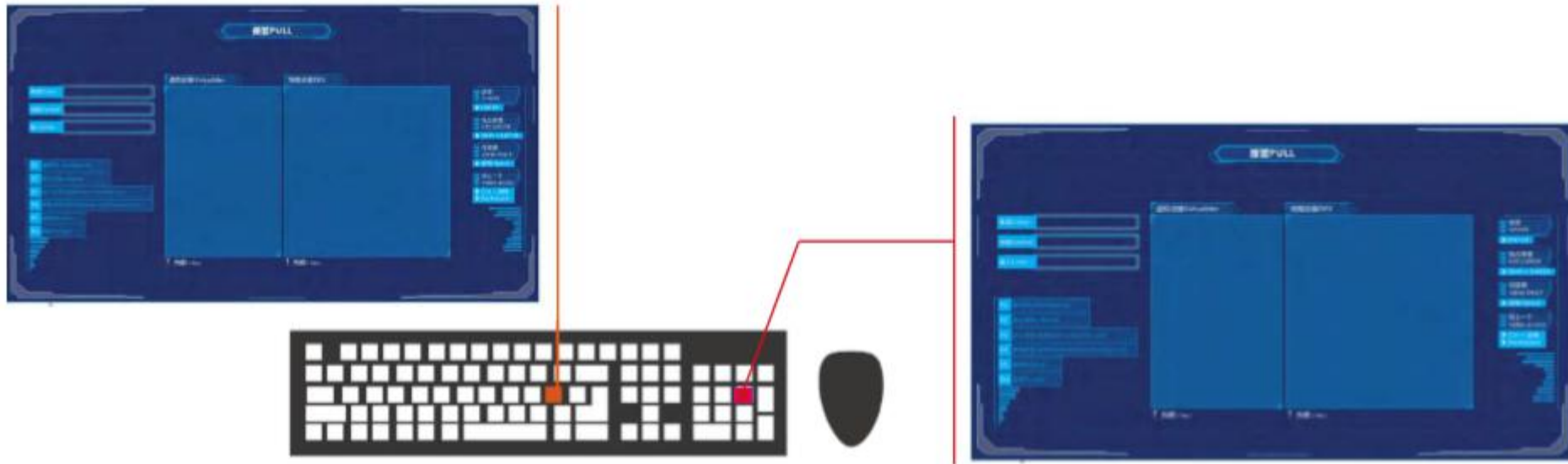
- Press “Menu” button(in the center of “LOGIN” OSD), then press F2 to enter “Mouse/Display Matrix”
- Insert a matrix i.e. name it “workspace1”, add the IP address matrix of KVM decoder to finish;



# Introduction to HOTKEY & OSD

Operator can get access to any computers by OSD

Operator's personal configuration will be acquired whichever KVM Console he log in.





# HOTKEY - Get/Takeover

STEP1: Login by Double-click CTRL, type username/password, then escape by ESC

STEP2: Move your mouse to Cross LCD one by one

STEP3: Double-click CTRL, to activate GET, Double-click CTRL again to activate KVM Control Panel

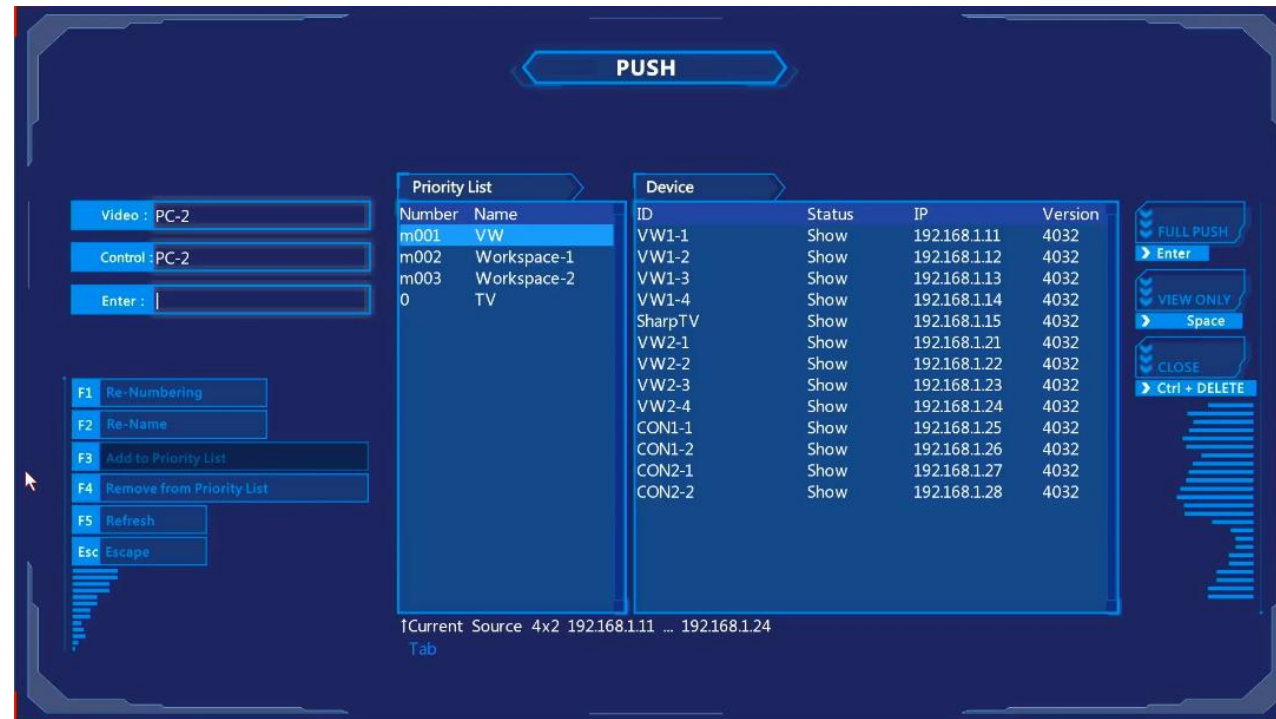
STEP 4: move arrow key to select the PC that you are going to gain access to, Press ENTER to get access

# HOTKEY - Push/Project

Step 1: Double-click SHIFT

Step 2: Move arrow key to select the video wall

Step 3: Press ENTER to select video wall partition(you will see a red box on the wall), then ENTER to push current PC to the red box area.



# HOTKEY - Multi-view Layout-Basic

Step 1: Double-click ALT, Select the “Multi-view control bar” on top of monitor, click to select, press ESC to quit

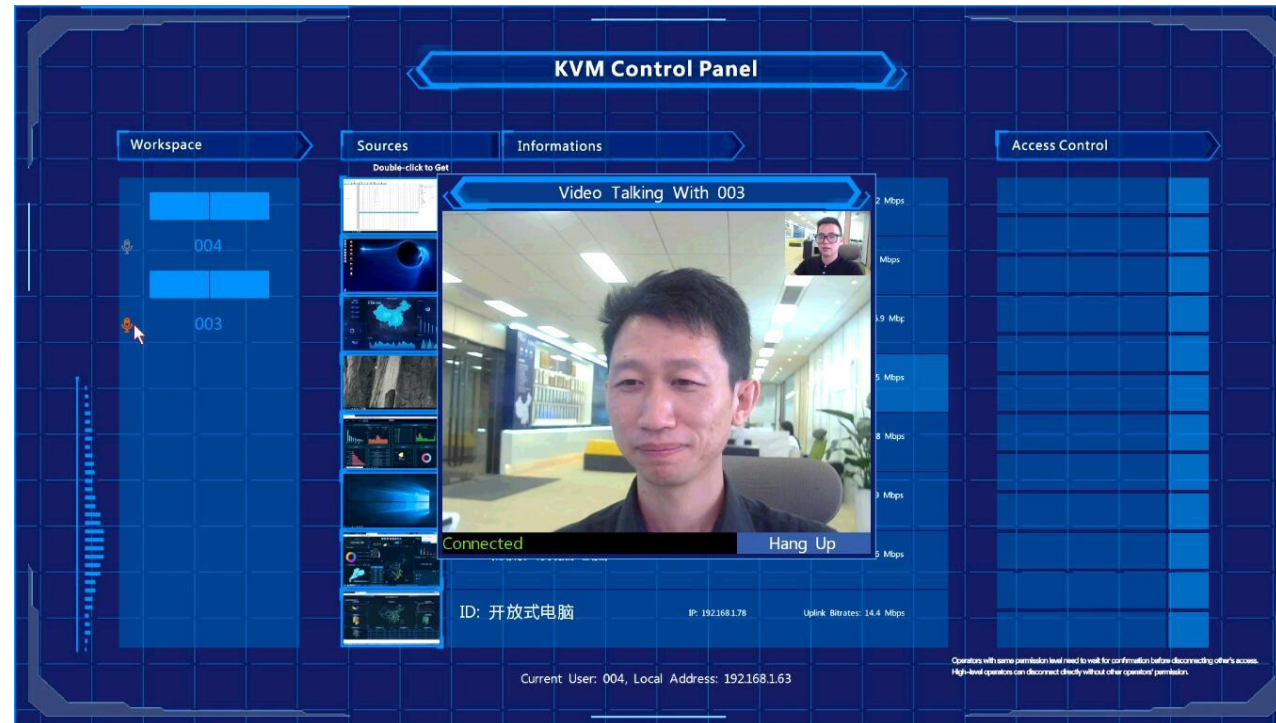
Step 2: Move cursor into any block of a layout, Double-click CTRL/SHIFT to replicate GET/PUSH



# Video Conference Functions

With a CTIA headset + USB camera connecting to the main KVM decoder:







- On KVM Control Panel, click the icon of Microphone(under Workspace) to launch one-to-one video calls
- Double-ALT to open Multi-view control bar, click “Custom” button, a 4x4 layout will open for maximumly 16 operators to have video conference



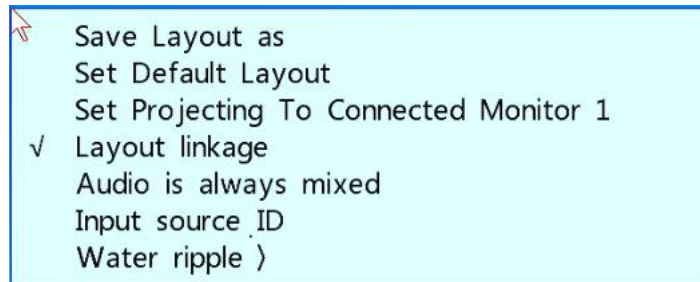
# Multi-view Layout - icons



Above is Multi-view control bar

ICON	Description
	Pin the Multi-view control bar on screen
	6 default multi-view layouts
	Originally for custom-made layout, now defined as video conference mode
	Add new layers/windows on current layout(Max 8 layers)
	Lock the current layout, with mouse control
	Lock current mouse control, view only

# Multi-view Layout - More Options and Control



Double-ALT to open Multi-view control bar, This is the menu if you right click

Menu	Function Description(After ticking this menu)
Save Layout as	Overwrite default multi-view layouts by current layout
Set default layout	Reset current layout to be default multi-view layout
Set Projecting To Connected Monitor	Double-click a smaller window, to project to a connected monitor
Layout linkage	Other connected monitors will sync the layout whatever you selected
Audio is always mixed	Audio from multiple layer's source is mixed
Input source ID	ID of encoder is displayed
Water ripple	Locate/track your mouse cursor, by a water ripple(sensitivity adjustable)



**To Learn more, please log onto [www.avcit.com](http://www.avcit.com)  
or email to [support@avcit.com](mailto:support@avcit.com)**